

Clearlight®

How To Change a Temperature Sensor

What You will Need:

- Philips Head Screw Driver
- Step Ladder

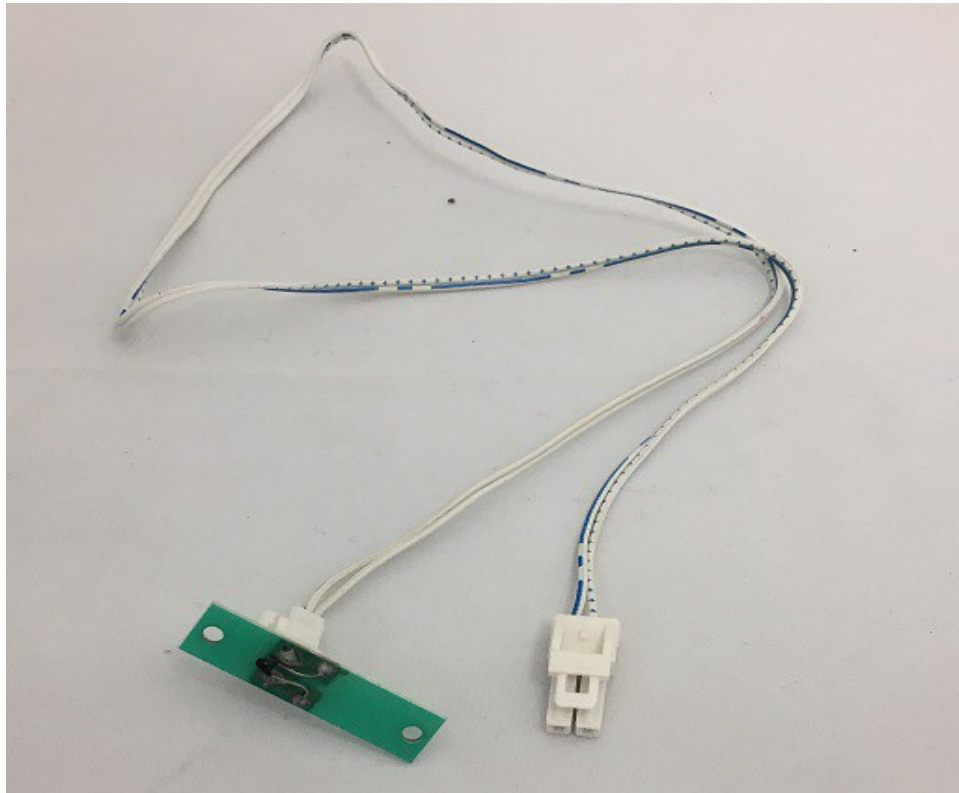
Important: Unplug the Sauna before starting. Temp Sensor wire molex connectors should always be two prong regardless of the color of the wiring.

Step 1: Using the step ladder go to the roof of the Sauna to locate the Temp Sensor. The Temp Sensor can be found on the power cord side of the Sauna. The Temp Sensor is small, on top of small wood block with mesh usually next to a speaker.

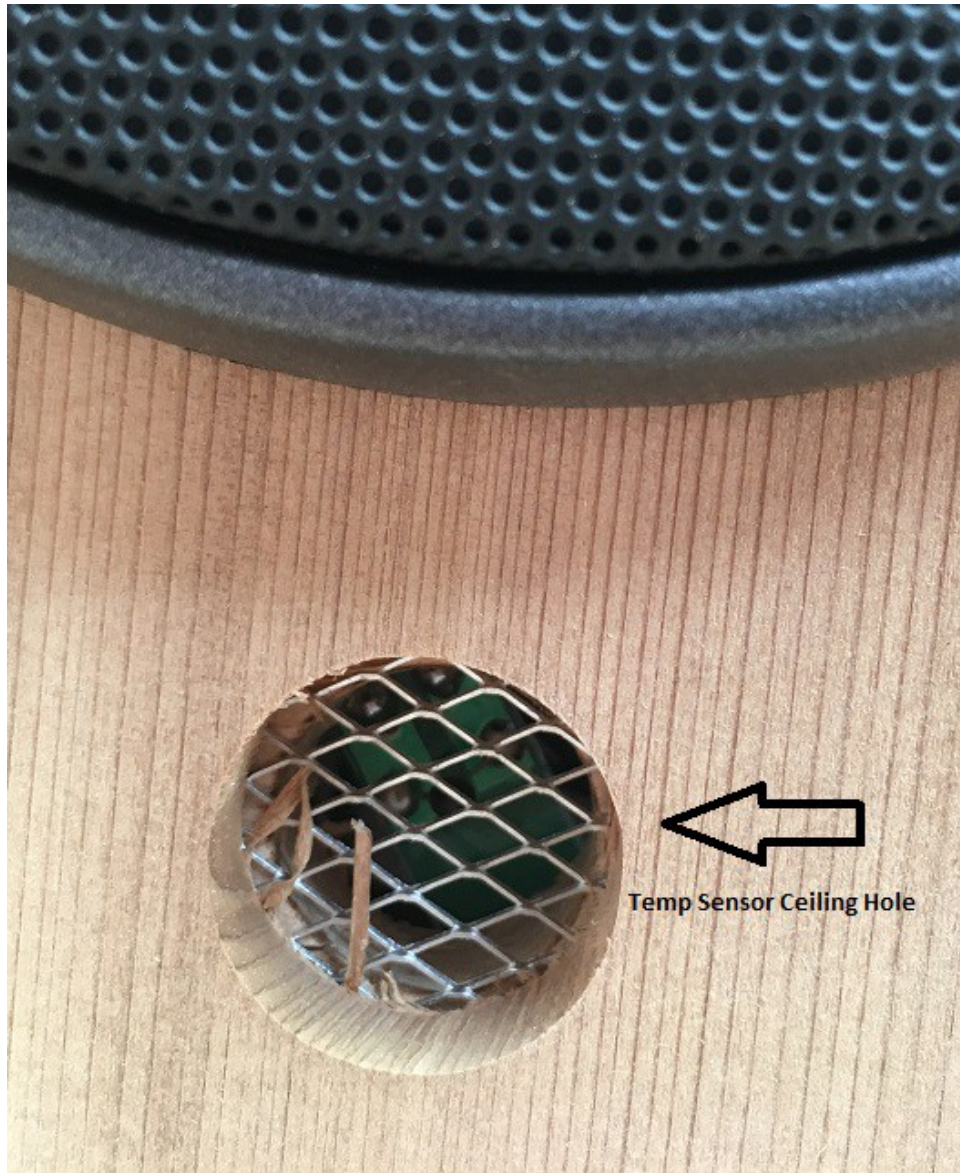
Step 2: Once the Temp Sensor is found disconnect the two prong molex wire connector from the Temp Sensor and disconnect it from the silver power supply box as well.

Step 3: Then using the screw driver unscrew the actual Temp Sensor from the Sauna. Take the new Temp Sensor and screw it to the same spot as the old Temp Sensor. Connect the molex connectors back to the power supply and new Temp Sensor.

Below are images illustrating the above process.



How To Change a Temperature Sensor



How To Change a Temperature Sensor