

# HOW TO FIX FULL SPECTRUM HEATER ISSUES

You will need:

- Phillips Head Screw Driver
- Gloves
- Slip Joint Pliers (Optional)
- Power Drill (Optional)
- Two People (Optional)

## **IMPORTANT: UNPLUG THE SAUNA BEFORE STARTING.**

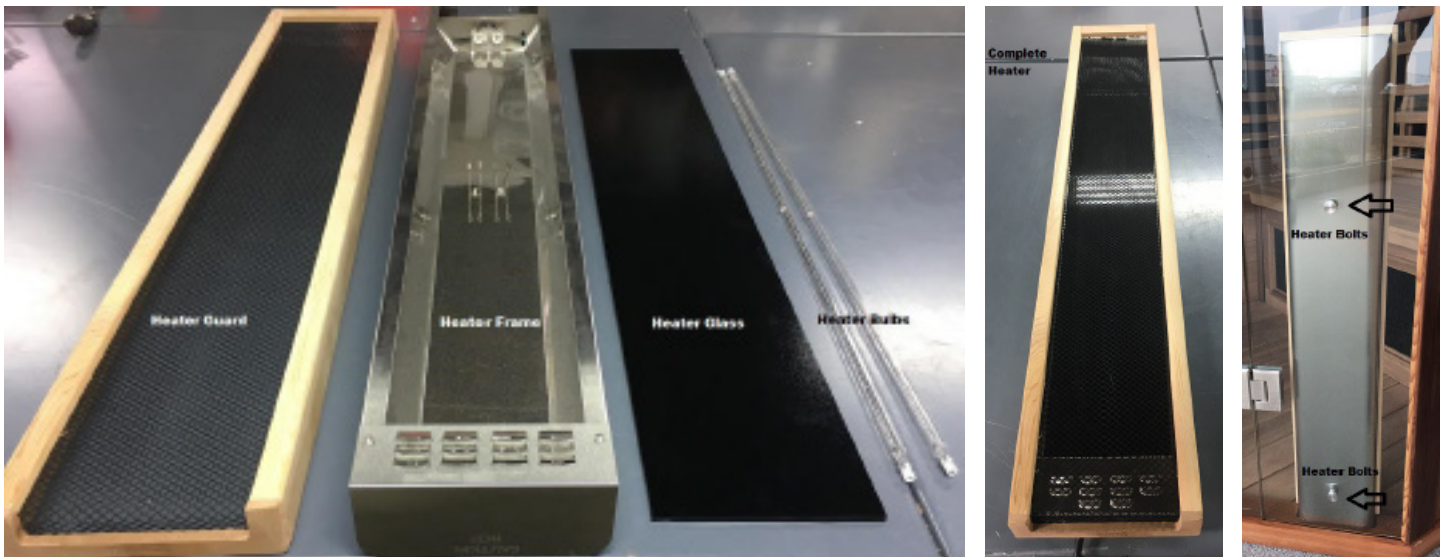
*Make sure to use gloves as sharp edges and glass are involved.*

*There are a few things that can cause a Full Spectrum Heater to inadvertently stop working.*

*The main causes are either.*

1. One or both Heater Bulbs have dislodged from their sockets.
2. One or both Heater Bulbs sockets are not making a secured connection.

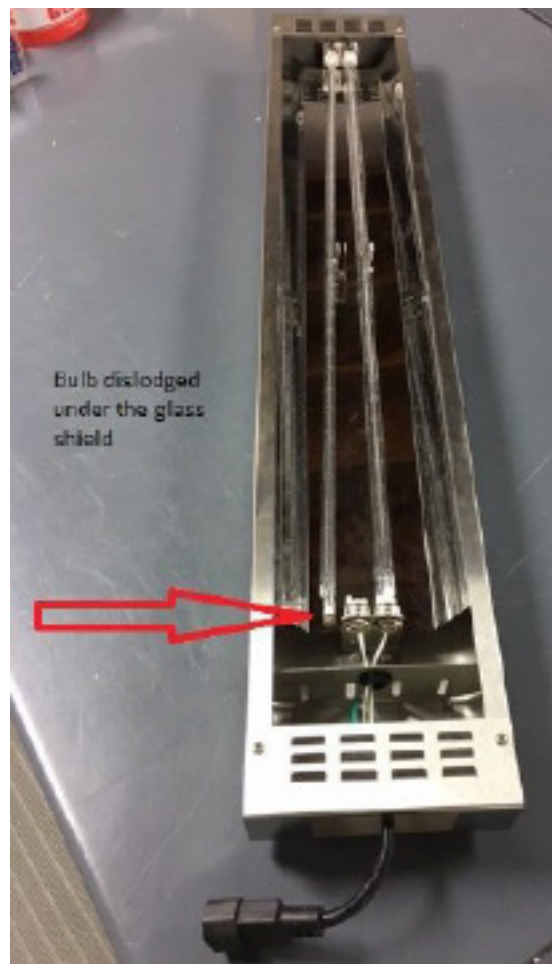
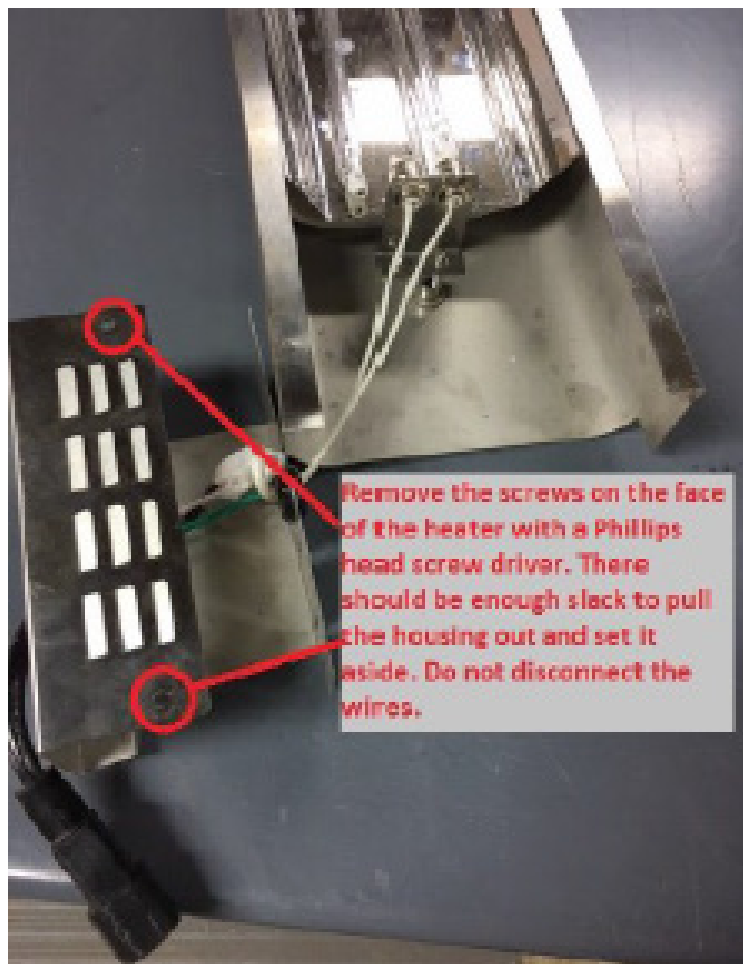
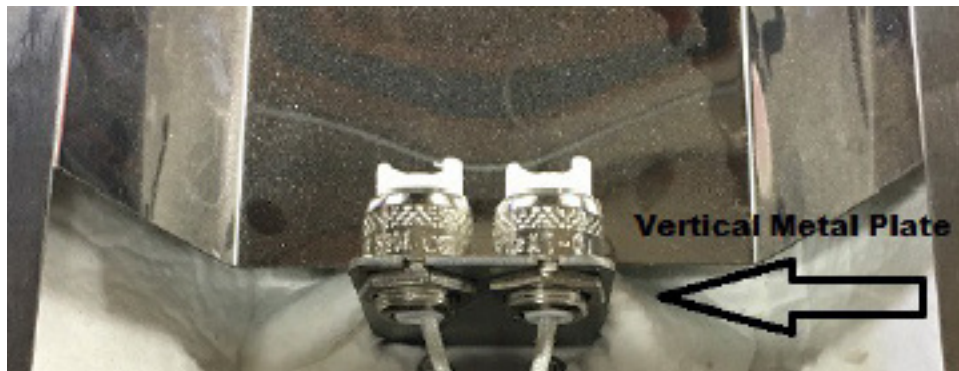
*To fix these problems you will need to remove the Full Spectrum Heater from the Sauna glass panel and take it apart and re-seat the bulbs.*



## **Step 1**

Remove the Full Spectrum Heater from Sauna. First, remove the wood/mesh Heater Guard by gently pulling from each end of the Heater. After the Heater Guard is removed make sure to unplug the Heater from the Sauna Floor. Now remove the Heater from the glass panel, along with a second person hold the heater while unscrewing the bolts attached to the heater and glass panel. Using either fingers or pliers, turn the bolts left to loosen them from the Heater and glass. The Heater should fall off once the bolts are removed so be extra careful not to drop the Heater in the process.

# Clearlight®



## Step 2

Once you have the Heater detached lay it on a flat surface. Using a screw driver unscrew each metal vented panel from both ends of the Heater. Once the metal vented panels are removed you will be able to slide out the tinted glass and place it to the side in a safe location.

For more questions or concerns, call (800) 798.1779 ext. 855.  
Or feel free to email [service@infraredsauna.com](mailto:service@infraredsauna.com)

# Clearlight®

## **Step 3**

The two long thin bulbs should be visible. If any of the bulbs are dislodged it will be very clear. Remove the bulbs (using gloves) from the sockets, gently examine them to see if any filaments are broken. If they look undamaged re-seat them into the sockets one end at a time.

## **Step 4**

Once the bulbs are re-seated test the Heater. You can do this without completely reassembling the Heater. Simply lay the Heater down inside the Sauna next to the floor plug without mounting it back onto the glass panel. Plug the Heater in and turn on the Sauna setting it the max temperature. The Heater bulbs should light up red within seconds, if they do immediately turn the Sauna back off.

*DO NOT TOUCH THE BULB WHILE THE HEATER IS ON.*

## **Step 5**

If the Heater still doesn't turn on, there is one final test to run. Even if it appears like the bulbs are firmly seated in the socket they still could lack connection. To make sure you have the firmest connection, you will need to push the bulbs, sockets, and socket housings towards each other. Push firmly each metal vertical plate (located between the white sockets and white wires) towards each other at each end of the heater.

## **Step 6**

Repeat Step 4 and activate the Heater to see if it is working again. If it is still not working the Heater is damaged somewhere internally and needs to be replaced.