

Clearlight®

Service Assist.

Quick service reference guide.



For more questions or concerns, call +1.510.601.1775 Option 2.
Or email service@infraredsauna.com

INDEX

How to change a keypad.....	pg. 3,4
How to align the glass	pg. 5,6
How to change the power cord.....	pg. 7,8,9
How to change the power supply.....	pg. 10,11,12
How to change a sauna light.....	pg. 13,14,15
How to change a sauna wall fixture.....	pg. 15,16,17
How to change a speaker.....	pg. 18,19
How to change a temperature sensor.....	pg. 20,21
How to disable Bluetooth/Aux sound system.....	pg. 22,23,24
How to disable/install wifi.....	pg. 25,26,27
How to install a full spectrum upgrade heater.....	pg. 28,29,30,31
How to resolve full spectrum heater issues.....	pg. 32,33,34
How to utilize the intensity button	pg. 35
How to install Medical Grade Chromotherapy.....	pg. 36,37, 38
How to install Vibrational Resonance Therapy.....	pg. 39,40,41,42

HOW TO CHANGE A KEYPAD

You will need:

- Phillip's Head Screwdriver
- Camera (Optional)
- Dull Knife (Optional)

IMPORTANT: UNPLUG THE SAUNA BEFORE STARTING.

Our Sauna Keypads have changed over the years, but the steps to change them out have primarily stayed the same.



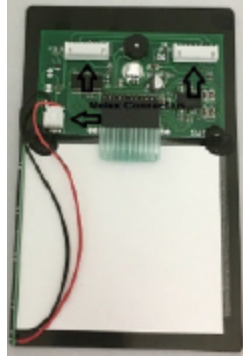
Step 1

Notice the wooden frame with two screws around the Keypad. Unscrew them to gain access to the Keypad itself. If you have a two Keypad Sauna, only the inside wooden frame has screws to gain access to both Keypads.



Two keypad system vs single keypad system

Clearlight®



Step 2

Pull the Keypad from the wall and look for the Molex wire connections on the Keypad. The connector with the most wires is called the Data Cable. Depending on the Keypad model, the Data Cable might not match the replacement Keypad. Make sure to check the connector before proceeding.



Step 3

Disconnect the Molex connectors and don't worry if the Keypad has extra unused connectors. Connectors might also be covered in a white glue. This is easily removed with either your fingernails or a dull knife. It is a good idea to photograph the Keypad connections before removing it from the sauna.

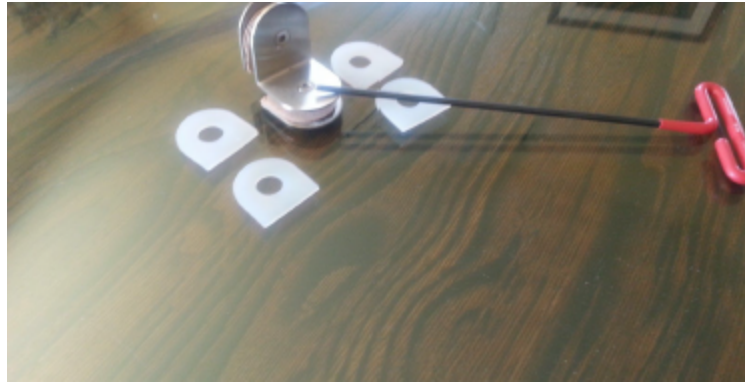
Step 4

Set aside the old Keypad and reverse the steps, taking care to make sure the replacement Keypad connectors are firmly seated and the wood frame is screwed back in tightly.

GLASS ALIGNMENT GUIDE

Clearlight®

Please refer to our installation manual that you received with your unit on page 11 in addition to this guide.



Step 1

Use provided hardware and allen wrench to connect the glass panels. If panels are uneven you will need to use a level and shims to adjust the glass panels so the door will close properly and connect with the magnet at the bottom of the panel.



Step 2

Make sure unit is level by as indicated in the photo above.

Clearlight®



Step 3

It may be necessary to shim the front and the sides of the unit in order to get the panels to align. This issue is caused when the sauna is on an uneven surface.



Step 4

It is also important to make sure all the weather stripping has been properly installed – with no kinks and that it is flush with the edge of the glass.

HOW TO CHANGE A POWER CORD

For more questions or concerns, call +1.510.601.1775 Option 2.
Or email service@infraredsauna.com

Clearlight®

You will need:

- Phillip's Head Screwdriver
- Step Ladder

IMPORTANT: UNPLUG THE SAUNA BEFORE STARTING.

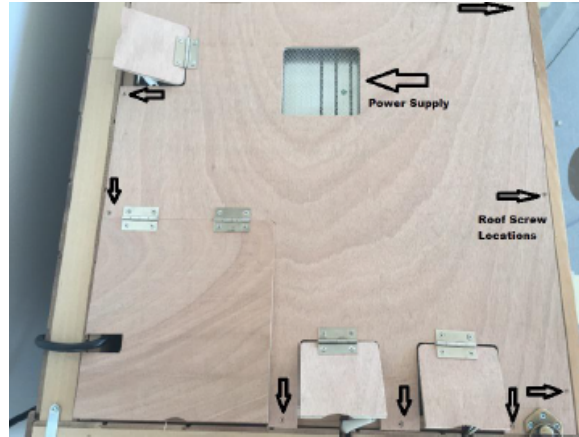
Make sure the new power cord outlet plug matches the old plug.



Step 1

Using the step ladder, go to the roof of the sauna and locate the power cord. Most power cords can be found in the left upper corner of the sauna.

Clearlight®



Step 2

Follow the power cord along the inside roof wall to the power supply found under a mesh cut out in the roof. Unscrew enough roof panels to expose the power supply and power cord connectors.



Step 3

Once exposed follow the power cord to where a large Molex connector meets the power supply. Disconnect the Molex connector to release the power cord from the power supply and sauna.

Clearlight®



Step 4

Finish removing the power cord by unscrewing all the plastic tabs holding the power cord to the sauna. Take any new power cord and reverse the above steps. Making sure the connectors between the power cord and power supply are firmly connected.

HOW TO CHANGE A POWER SUPPLY

For more questions or concerns, call +1.510.601.1775 Option 2.
Or email service@infraredsauna.com

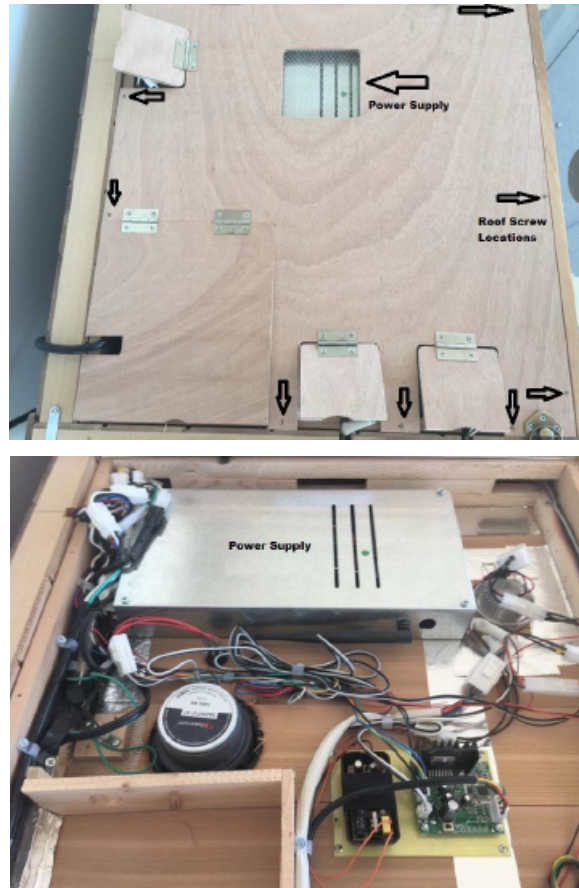
Clearlight®

You will need:

- Phillip's Head Screwdriver
- Step Ladder
- Wiring Diagram

IMPORTANT: UNPLUG THE SAUNA BEFORE STARTING.

All current power supplies are replaced the same way regardless of current sauna models.



Step 1

Using the step ladder, go to the roof of the sauna. The Power Supply is a metal rectangular silver box. The Power Supply is found under the corresponding “trap door” with a mesh square cut out.

Clearlight®



Step 2

Unscrew corresponding roof panels to gain access to the Power Supply. Unscrew the four screws that attach the old Power Supply to the sauna itself. DO NOT unhook any wire Molex connectors or remove the old Power Supply yet.



Step 3

Take the new Power Supply and place on top the of old Power Supply. Match the new Power Supply with the corresponding wires and cords coming out of the old Power Supply. One side will have all male Molex connectors and the other will have female Molex connectors.

Clearlight®

Step 4

Match connector to connector. Disconnect each Molex connector one at a time and connect it to the new Power Supply. Once all connectors are connected to the new Power Supply, slide the old Power Supply out, then screw down the new Power Supply to the sauna.

Step 5

Double check all Molex connectors are firmly connected to the new Power Supply before screwing back down the roof wood panels and closing the any trap doors.

Clearlight®

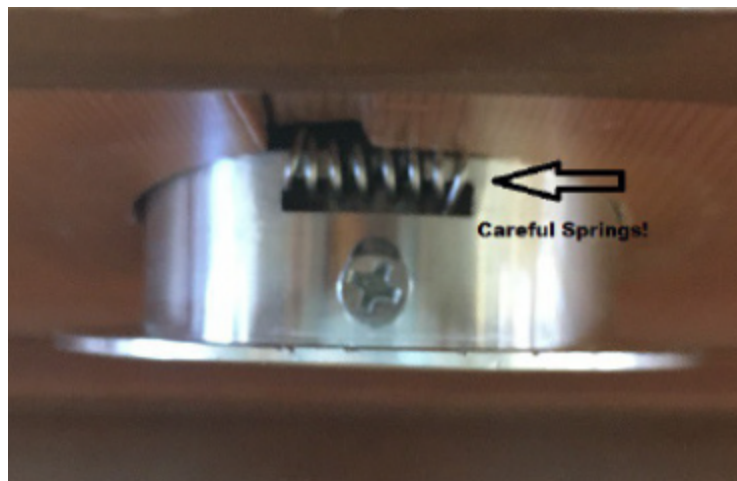
HOW TO CHANGE A SAUNA LIGHT

You will need:

- Flat Head Screwdriver

IMPORTANT: UNPLUG THE SAUNA BEFORE STARTING.

Light fixtures might look different depending on location and model. Each one is hung the same way.



IMPORTANT: LIGHT FIXTURES USE METAL SPRINGS TO BE HELD IN PLACE.

These springs act like a mouse trap, at times springing back with harmful force if not careful.

Clearlight®



Step 1

Gently pull down the fixture from the outer metal fixture ring. As the fixture is being pulled down, the springs should become noticeable. Once the springs are located, make sure to pull down the fixture from the opposite sides of the springs.



Step 2

Unscrew corresponding roof panels to gain access to the Power Supply. Unscrew the four screws that attach the old Power Supply to the sauna itself. DO NOT unhook any wire Molex connectors or remove the old Power Supply yet.

Clearlight®

If you have a Sanctuary Model Sauna the light fixture will require an additional step. This light fixture has an extra part, identified by a white plastic box labeled LED driver. Make sure to disconnect the old LED driver and replace it.

Step 3

Being just as careful as before, force the spring clips back towards each other, so they can fit inside light fixture hole. Once the spring clips are up inside the hole the fixture should easily snap back into place.

Clearlight®

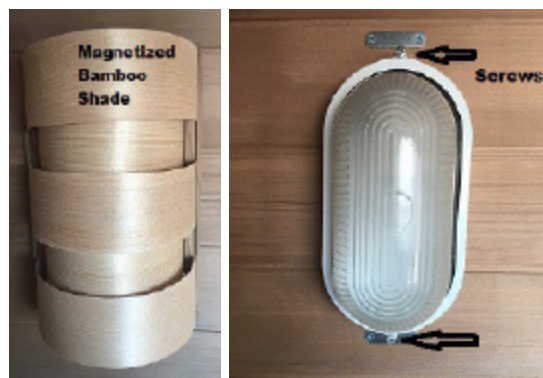
HOW TO CHANGE A SAUNA WALL FIXTURE

You will need:

- Philip's Head Screwdriver

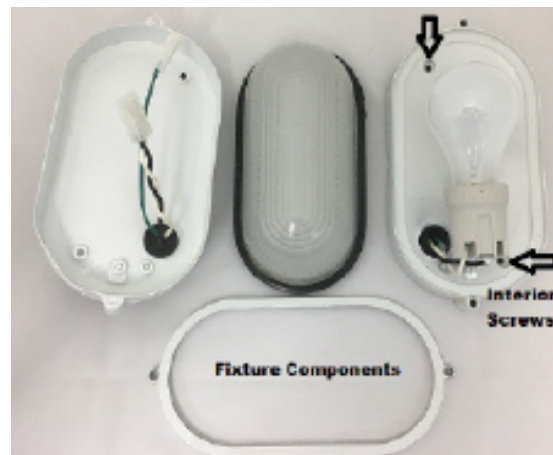
IMPORTANT: UNPLUG THE SAUNA BEFORE STARTING

Light fixtures might look different depending on the age of the sauna, but the steps to replace a fixture are the same.



Step 1

Gently remove the magnetized Bamboo shade from the fixture. Notice the two screws at each end of the fixture, unscrew and gently remove the glass from fixture.



Step 2

The light bulb and the wall mounting should be exposed, remove the light bulb. The fixture will be

Clearlight®

mounted to the wall by two more screws. Unscrew those from the wall.



Step 3

Once pulled from the wall, unhook the fixture wire Molex connectors from the fixture and the wall.

Step 4

Check the new fixture to make sure the Molex connectors match the wall connectors. Reverse the steps above making sure to firmly connect the Molex connectors from the fixture to the wall.

HOW TO CHANGE A SPEAKER

You will need:

- Phillip's Head Screwdriver
- Step Ladder
- Small Flat Edge

IMPORTANT: UNPLUG THE SAUNA BEFORE STARTING.

Our Sauna Speakers have changed over the years, but the steps to change them have primarily stayed the same.



Step 1

Start by removing the old speaker. Remove the mesh cap over the speaker inside your sauna. Using a flat edge, wedge it under the mesh edge to pop it off, exposing the outer speaker ring and its four screws.



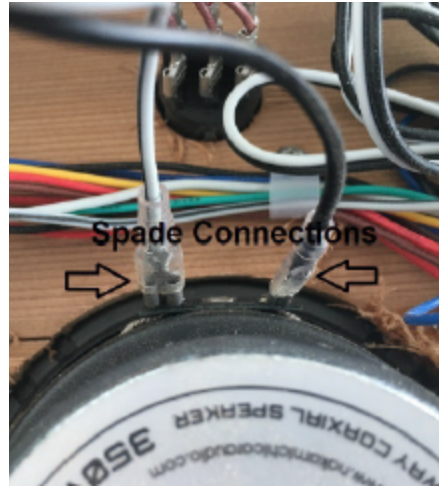
Step 2

The speaker is held in place to the ceiling by a plastic ring, unscrew this ring from the speaker.

Step 3

Clearlight®

Using the Step Ladder, go to the roof of the sauna from the outside. Unscrew all the necessary screws to lift the roof wood panels to expose the speaker.



Step 4

To remove the old speaker you must disconnect the two spade cables, which attaches the speaker to Saunas electronics. Be careful when removing the spade connectors. Make sure to pull them off from the metal not the wires as they can easily come loose.

Step 5

Reverse the above steps to secure the new Speaker making sure to pop the mesh cover back on once you have completed connecting it on the roof and inside the ceiling.

Clearlight®

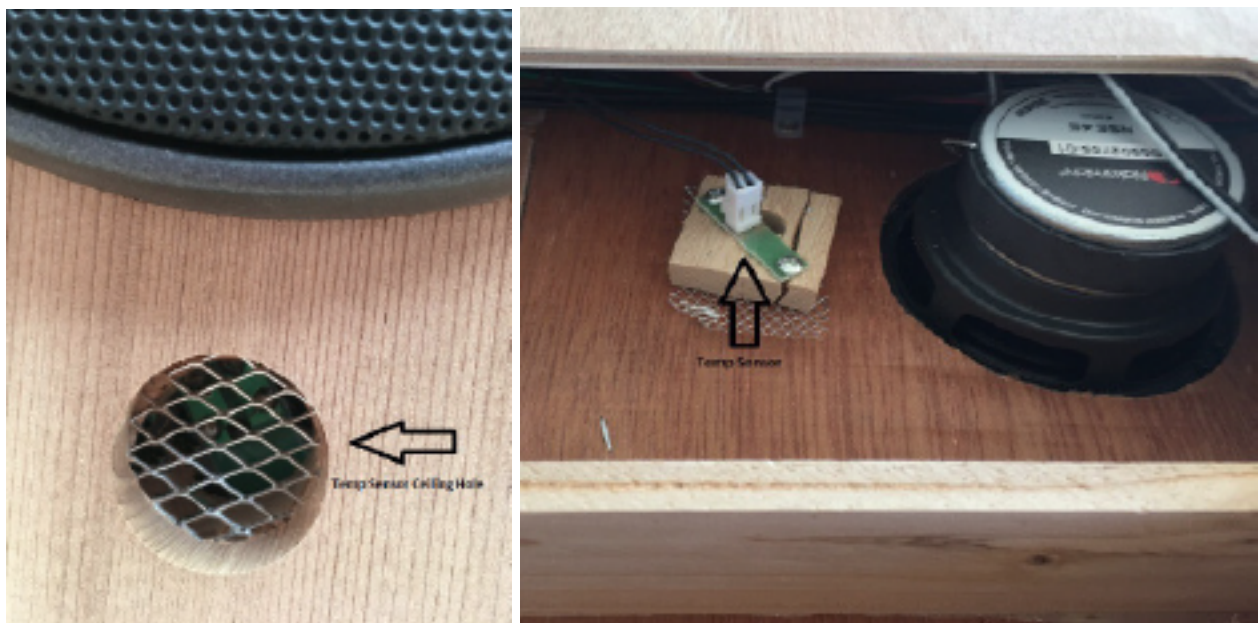
HOW TO CHANGE A TEMPERATURE SENSOR

You will need:

- Phillip's Head Screwdriver
- Step Ladder

IMPORTANT: UNPLUG THE SAUNA BEFORE STARTING.

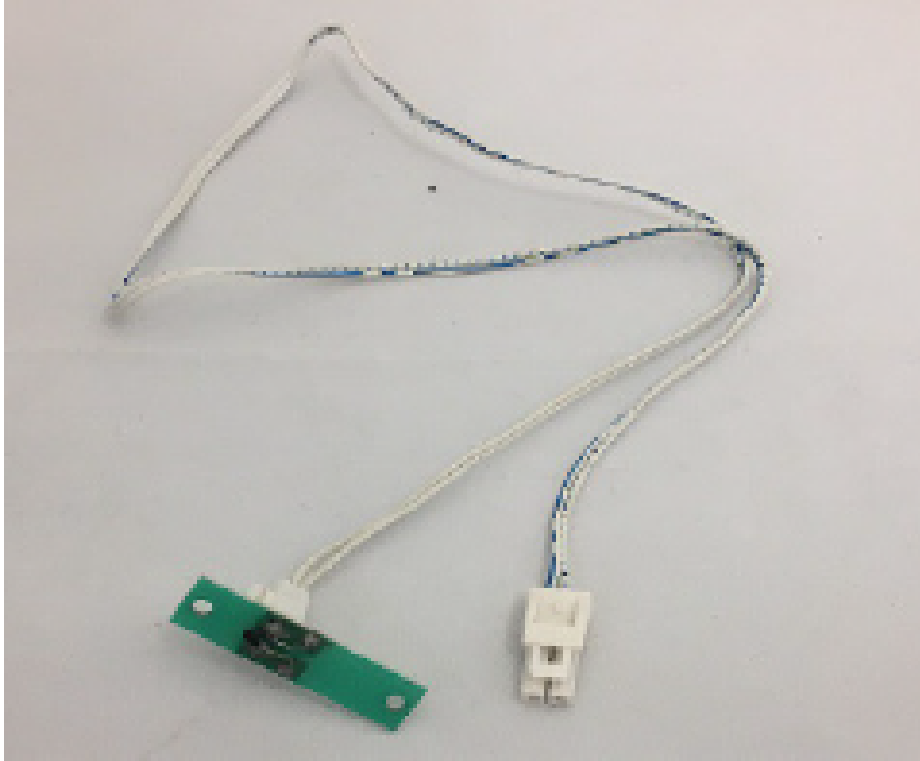
Temp Sensor wire molex connectors should always be two prong regardless of the color of the wiring.



Step 1

Using the step ladder go to the roof of the sauna to locate the Temp Sensor. The Temp Sensor can be found on the power cord side of the Sauna. The Temp Sensor is on top of small wood block with mesh usually next to a speaker.

Clearlight®



Step 2

Once the Temp Sensor is found, disconnect the two prong molex wire connector from the Temp Sensor and disconnect it from the silver power supply box as well.

Step 3

Then using the screwdriver unscrew the actual Temp Sensor from the Sauna. Take the new Temp Sensor and screw it to the same spot as the old Temp Sensor. Connect the Molex connectors back to the power supply and new Temp Sensor.

Clearlight®

HOW TO DISABLE BLUETOOTH AUX/SOUND SYSTEM

You will need:

- Phillip's Head Screwdriver
- Step Ladder
- Power Drill (Optional)

IMPORTANT: UNPLUG THE SAUNA BEFORE STARTING.

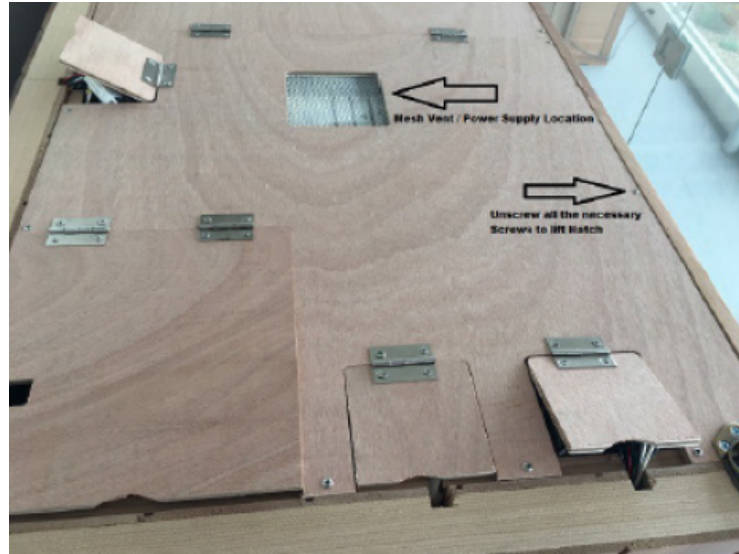
This circuit board controls all audio functions on your sauna. By disabling it you will no longer have the ability to play any audio through the Sauna speakers.



Step 1

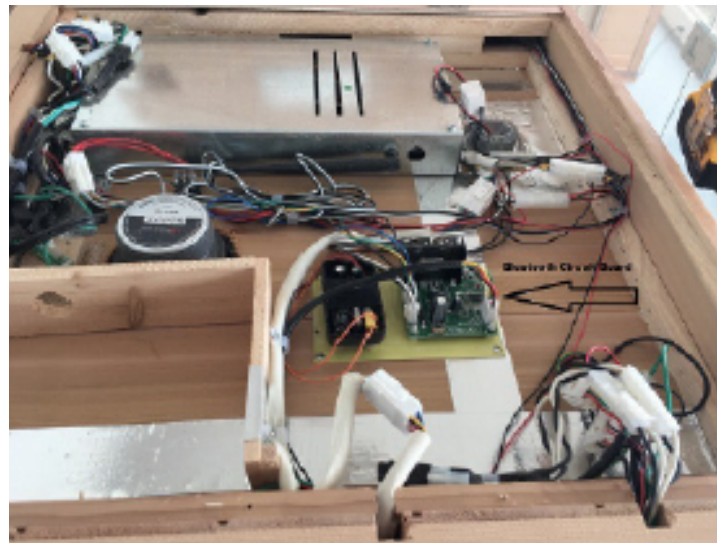
Using the step ladder to access the roof of your sauna, position it on the side of the Sauna where the power cord descends from.

Clearlight®



Step 2

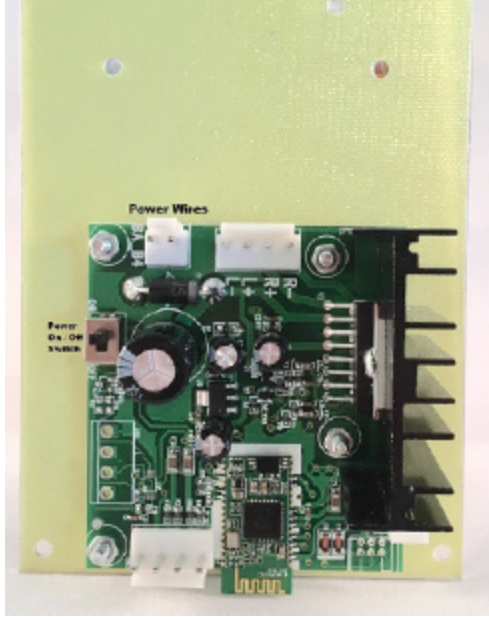
Once you have access to the roof you will need to unscrew the roof hatch that corresponds with the location of the Bluetooth circuit board. The Bluetooth circuit board is located under the same hatch where you will find the metal silver power supply box. To find the correct hatch look for a mesh cut out on the roof wood. Unscrew the corresponding hatch screws to gain access.



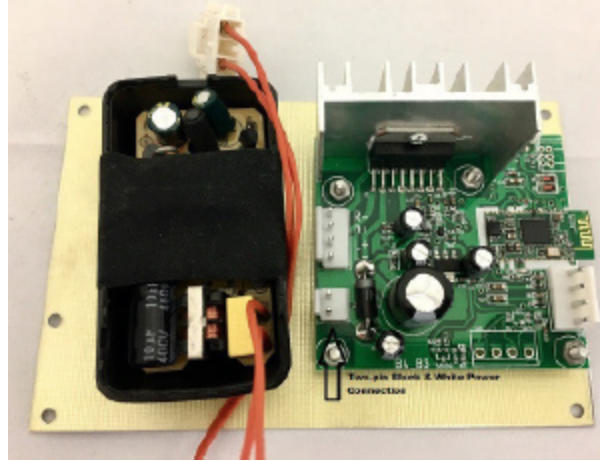
Step 3

Once unscrewed, lift the hatch. You will see what might seem like a confusing set of wires and electrical parts. The Bluetooth circuit board will be near the large metal silver power supply box (not inside the box). Look for the Bluetooth circuit board located on a yellow textured board screwed onto the roof.

Clearlight®



Newer Bluetooth Circuit Board



Older Bluetooth Circuit Board

Step 4

Once you have located the Bluetooth circuit board it is time to disable it. This can be done one of two ways. Depending on the age of your sauna, the Bluetooth circuit board has two designs. If you have the older design, the only way to disable is unconnect the two-pin black & white moxer connector. This controls the power to the unit. On the newer Bluetooth circuit board, there is an very small switch. Simply switch it to off position. Now the circuit board is disabled.

Step 5

Lastly, while you still have access to the roof plug your sauna back into the outlet and turn it on to test if the Bluetooth is disabled. Then screw the roof hatch back down.

Clearlight®

HOW TO DISABLE / INSTALL WIFI

You will need:

- Phillip's Head Screwdriver
- Step Ladder
- Power Drill (Optional)

IMPORTANT: UNPLUG THE SAUNA BEFORE STARTING.



Step 1

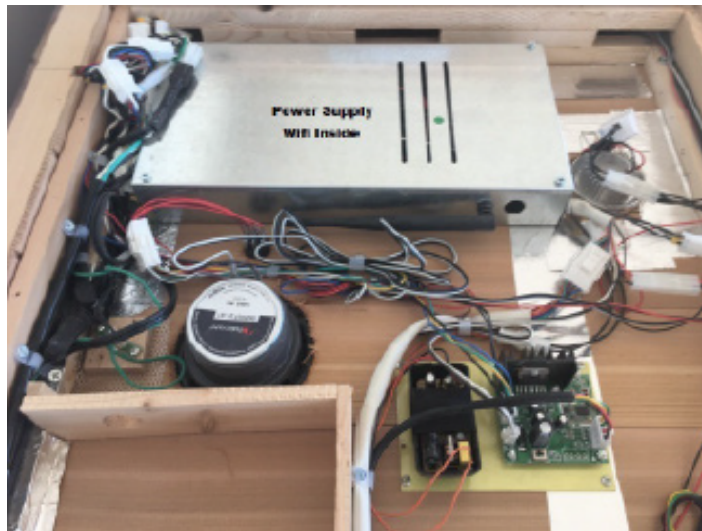
Using a step ladder, locate the power supply on the roof of the Sauna. The power supply is underneath a square mesh vent, to access it will require unscrewing one side of the roof, usually the side where the power cord is located.

Clearlight®



Step 2

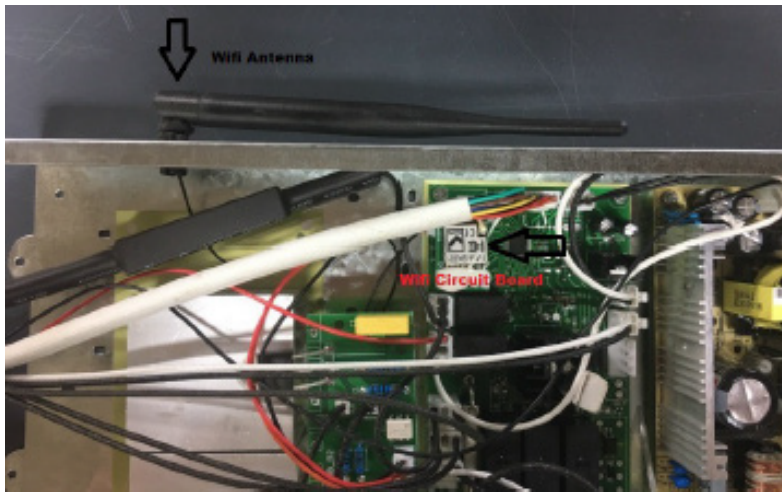
The power supply is a large rectangle metal box. Unscrew the four corner screws to gain access to the electronic components inside.



Step 3

The WiFi is a small circuit board. The best way to find it is to follow the outside antenna wire to the board. Simply pull the circuit board off the power supply. This will instantly disable the WiFi.

Clearlight®



Step 4

On the circuit board is a small gold metal magnetic connector. By pulling this off it will free the WiFi antenna, allowing it to be removed as well.



Step 5

By removing these components you will only disable the WiFi capabilities of the sauna nothing else will be affected. To re-enable the WiFi, re-attach the antenna and connect the WiFi circuit board to the power supply. Then plug the Sauna back into the outlet and hold the power button on the keypad for six seconds to reset the WiFi.

Clearlight®

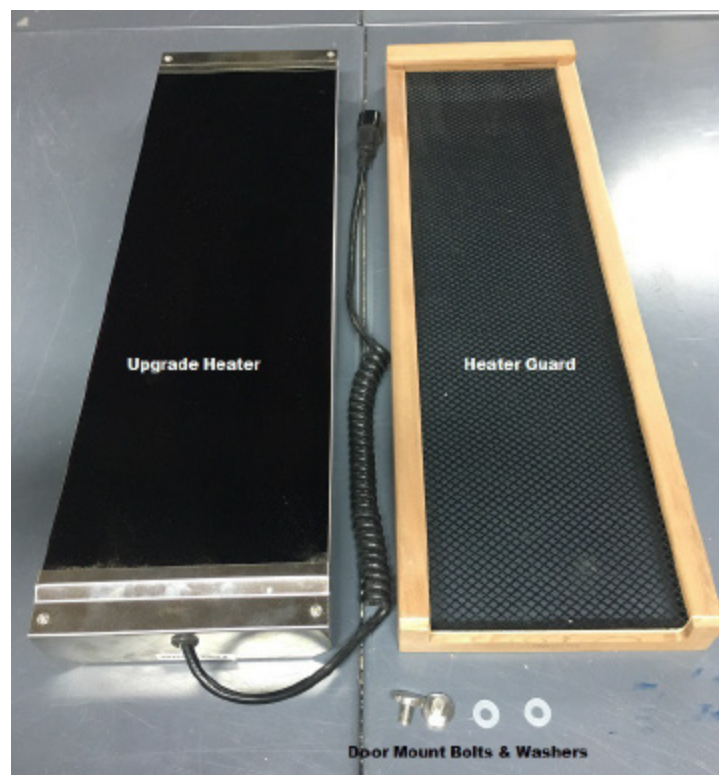
HOW TO INSTALL A FULL SPECTRUM UPGRADE HEATER

You will need:

- Slip Joint Pliers (Optional)
- Two People (Optional)

IMPORTANT: UNPLUG THE SAUNA BEFORE STARTING.

Installation requires both attaching the heater to the sauna and activating the Upgrade Heater Plug.



Step 1

Attach the Upgrade Heater to the sauna. Remove the Heater Guard on the Heater and existing metal plugs on the sauna door. Connect the Upgrade Heater to the plug located on the right side of the sauna near the door. Align the the holes in the back of the heater with the holes on the door. Using the enclosed screws and washers, secure the heater to the glass through the pre-drilled hole.

Clearlight®



Step 2

Once attached the Upgrade Heater is ready to be activated, the activation requires a set of Keypad Commands to activate it. Once done, the Upgrade Heater bulbs should light-up almost instantly.

1. Turn on the sauna by hitting the power button on your Keypad.
2. Hit the temperature button so your sauna is set to Celsius.
3. Using the TEMP buttons set the sauna to 60° Celsius.
4. Hold down the AUX button for 5 seconds.

Step 2a

Once attached the Upgrade Heater is ready to be activated, the activation requires a set of Keypad Commands to activate it. Once done the Upgrade Heater bulbs should light-up almost instantly.

- Sanctuary Models
 1. Set temperature to the max setting.
 2. Hold down the light button for 10 seconds.
- Premier Models
 1. Set temperature to the max setting.
 2. Hold down the inside and outside light buttons simultaneously for five seconds.

Clearlight®



Premier Model Upgrade Plug - Front panel below side heater



Sanctuary Model Upgrade Plug - On sauna floor near glass door

Clearlight®



Important Keypad Buttons

For more questions or concerns, call +1.510.601.1775 Option 2.
Or email service@infrasauna.com

HOW TO FIX FULL SPECTRUM HEATER ISSUES

You will need:

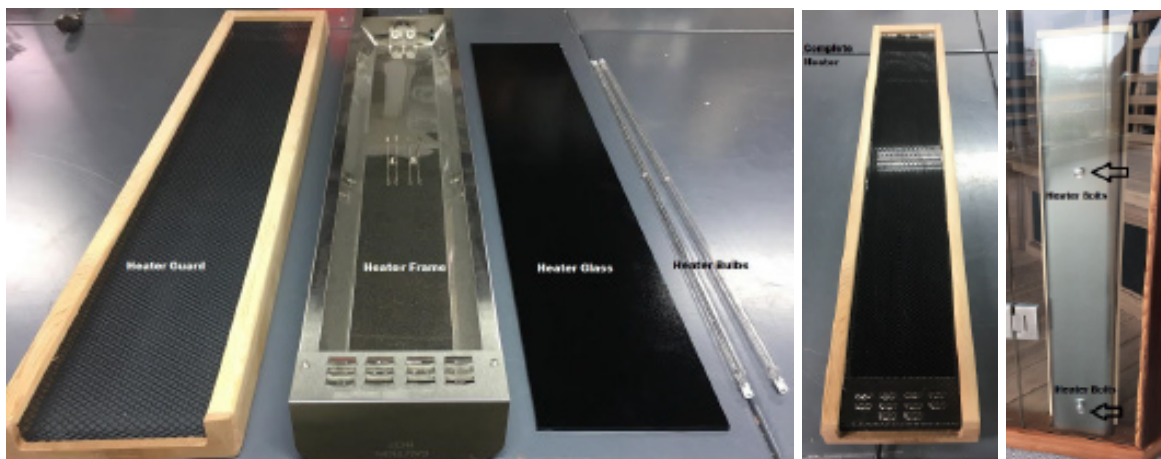
- Phillips Head Screwdriver
- Gloves
- Slip Joint Pliers (Optional)
- Power Drill (Optional)
- Two People (Optional)

IMPORTANT: UNPLUG THE SAUNA BEFORE STARTING.

Make sure to use gloves as sharp edges and glass are involved. There are a few things that can cause a Full Spectrum Heater to inadvertently stop working. The main causes are either:

1. One or both Heater Bulbs have dislodged from their sockets.
2. One or both Heater Bulbs sockets are not making a secured connection.

To fix these problems you will need to remove the Full Spectrum Heater from the sauna glass panel and take it apart and re-set the bulbs.



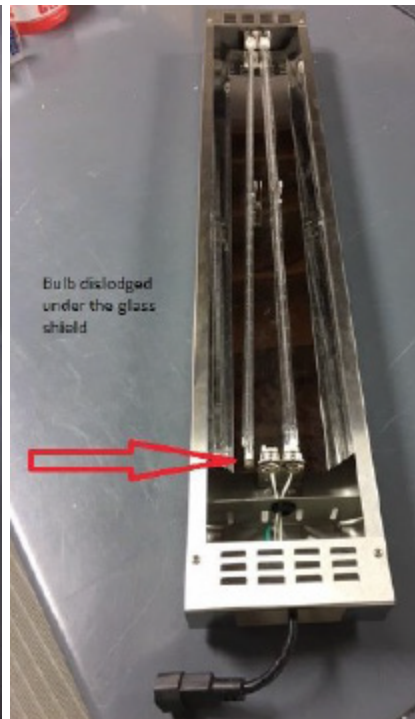
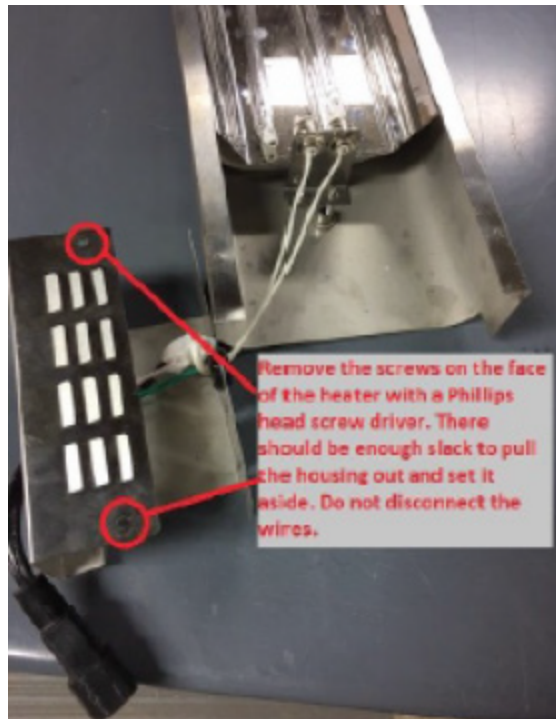
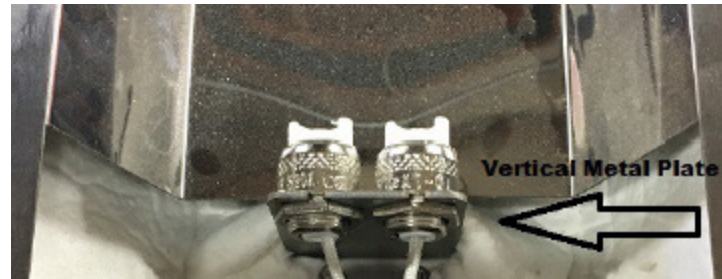
Step 1

Remove the Full Spectrum Heater from sauna. First, remove the wood/mesh Heater Guard by gently pulling from each end of the Heater. After the Heater Guard is removed make sure to unplug the Heater from the sauna floor.

Now remove the Heater from the glass panel, and along with a second person, hold the Heater while unscrewing the bolts attached to the Heater and glass panel. Using either fingers or pliers, turn the bolts

Clearlight®

left to loosen them from the Heater and glass. The Heater should fall off once the bolts are removed so be extra careful not to drop the Heater in the process.



Step 2

Once you have the Heater detached lay it on a flat surface. Using a screwdriver unscrew each metal vented panel from both ends of the Heater. Once the metal vented panels are removed you will be able to slide out the tinted glass and place it to the side in a safe location.

Step 3

The two long thin bulbs should be visible. If any of the bulbs are dislodged it will be very clear. Remove the bulbs (using gloves) from the sockets, gently examine them to see if any filaments are broken. If they look undamaged re-seat them into the sockets one end at a time.

Clearlight®

Step 4

Once the bulbs are re-seated test the Heater. You can do this without completely reassembling the Heater. Simply lay the Heater down inside the sauna next to the floor plug without mounting it back onto the glass panel. Plug the Heater in and turn on the Sauna setting it the max temperature. The Heater bulbs should light up red within seconds, if they do immediately turn the sauna back off.

DO NOT TOUCH THE BULB WHILE THE HEATER IS ON.



Step 5

If the heater still doesn't turn on, there is one final test to run. Even if it appears like the bulbs are firmly seated in the socket they still could lack connection. To make sure you have the firmest connection, you will need to push the bulbs, sockets, and socket housings towards each other. Firmly push each metal vertical plate (located between the white sockets and white wires) towards each other at each end of the heater.

Step 6

Repeat Step 4 and activate the heater to see if it is working again. If it is still not working the heater is damaged somewhere internally and needs to be replaced.



HOW TO ADJUST THE INTENSITY BUTTON

Issue: One NIR heater is not working

Unscrew both Near Infrared Heaters from the glass wall.

Plug the non-working heater into the outlet that the working heater was plugged into.

If the heater turns on then the outlet is the issue, if the heater doesn't work then the heater is the issue.

Intensity	Left FS Heater	Right FS Heater
Power On (Power button).....	ON.....	ON
1st Press (Intensity Button).....	ON.....	OFF
2nd Press (Intensity Button).....	OFF.....	ON
3rd Press (Intensity Button).....	OFF.....	OFF
4th Press (Intensity Button).....	ON.....	ON
5th Press (Intensity Button).....	ON.....	OFF

- 1) Left/right means when you sit inside, not face to the sauna.
- 2) When both FS heaters are OFF, and you press "Intensity" button for 3 seconds, the FS heater will be circling as 100% - 75% - 50% - 100% - 75%... There will be 2 seconds during each phase, and when your finger takes away, it will stay at this percentage while working.
- 3) It will never show 50% or 75% or 100% on LCD screen.
- 4) It will have no memory function, which means if you turn off the power, all will be re-started.

Power Issues

Issue: Sauna not turning on at all.

Unscrew both Near Infrared Heaters from the glass wall.

Plug the non-working heater into the outlet that the working heater was plugged into

If the heater turns on then the outlet is the issue, if the heater doesn't work then the heater is the issue.

1) Does radio or Bluetooth work? If yes, then the sauna is getting power. Check the saunas data cable connection points. Reseat connections by disconnecting and forcing the pins deeper into the Molex. Reconnect the Molex. Repeat at each connection point for the data cable.

2) Radio or Bluetooth does not work. Check the power cable at the wall and the power supply on the sauna. Check the breaker for the outlet the sauna is plugged into.

Clearlight®

HOW TO INSTALL MEDICAL GRADE CHROMOTHERAPY

You will need:

- Phillips Head Screwdriver
- Power Drill (Optional)
- Tape Measure (Optional)
- Flathead screwdriver (Optional)

Part List:

- Phillips Head Screwdriver
- Medical Grade Color Light Fixture
- (4) 1.25" Screws
- Remote Control
- CR2025 Battery (Included)

IMPORTANT: UNPLUG THE SAUNA BEFORE STARTING



Step 1

Remove the center Standard Chromotherapy light. Using either your fingertips or a flathead screwdriver, slowly pry the fixture from the ceiling. Be careful of the spring coiled latches when removing the Standard Chromotherapy light as they can act like a Mousetrap and snap your fingers.

Clearlight®



Step 2

Pull down the Standard Chromotherapy light until you expose a Blue/White cable. Disconnect the center light from Blue/White cable's connector. Push the Blue/White cable back up into the roof.

Clearlight®



Step 3

Next you will need to find the Red/Black cable. Using your fingers, feel around in the hole for the Red/Black cable. Connect the Red/Black cable coming out of the ceiling with the cable located on the back of the Medical Grade Chromotherapy.



Step 4

Using the (4) 1.25" screws, mount the Medical Grade Chromotherapy to the ceiling. Position the Medical Grade Chromotherapy centered over the ceiling hole before screwing in the the Medical Grade Chromotherapy unit.

Step 5

Plug the Sauna back into the outlet and use the remote provided to operate the Medical Grade Chromotherapy.

Clearlight®

VIBRATION RESONANCE THERAPY (VRT) INSTALLATION GUIDE

You will need:

- Phillips Head Screwdriver

IMPORTANT: UNPLUG THE SAUNA BEFORE STARTING.

Part List:

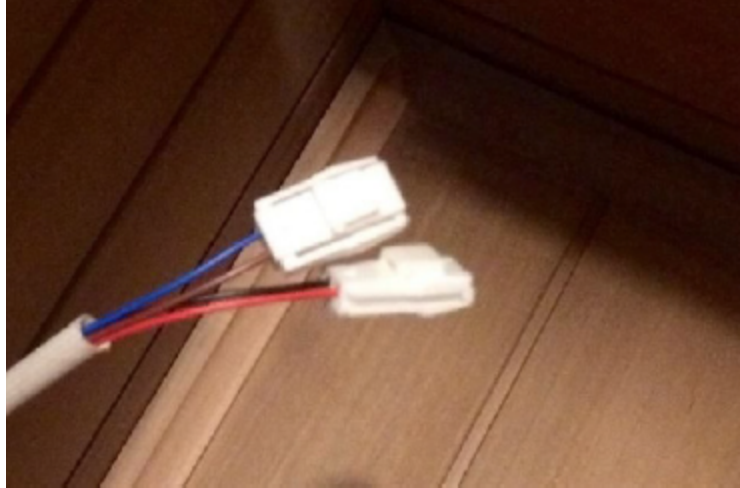
- 2 Vibration Transducers
- 2 Speaker Power Connections with Molex
- 2 VRT Mounting Brackets
- 6 Mounting Screws



Step 1

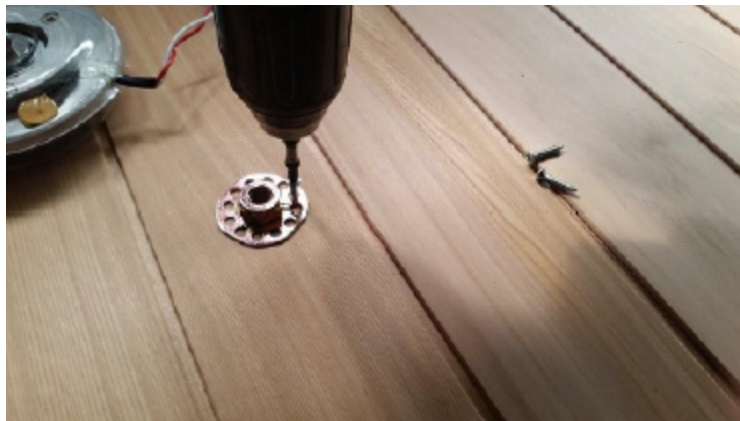
check to make sure you have the correct VRT Molex connectors. These are located in the area under the sauna bench. See the photo below.

Clearlight®



Step 2

Once you have located the VRT connectors, it is time to install the VRT Mounting Brackets. Screw the brackets into the flat side of the bench (not the ergonomic side) about 1/3 in from the left and right end of the bench and center it down the middle groove between bench slats.



The end result should look like this, and remember bench sizes vary depending on sauna model.

Clearlight®



Step 3

Once the VRT Mounting Brackets are installed you can screw the Vibrational Transducers into the brackets.

Step 4

Now plug the Speaker Power Connections to the Vibrational Transducers and then connect the white molex connectors to the molex connectors under the bench.

Step 5

Slide the Bench back into place being careful not to knock the Vibrational Transducers against the under bench support.

Step 6

To turn on the VRT you will need to flip the switch located in the ceiling next to the speakers. This will allow you to switch between the sound coming out of the audio speakers and the vibrational speakers.

Clearlight®



You will operate the VRT using the Bluetooth or Aux connection already installed in your sauna. You cannot have both the audio speakers located in the ceiling and the VRT speakers on at the same time.

Remember, the VRT is designed to be therapeutic and is vibration therapy. When the VRT is active, the bench will turn into the speaker to allow you to hear the audio. The audio quality will be dampened as the bench provides the audio.

Sit back, relax and enjoy your Clearlight® infrared sauna Vibrational Resonance Therapy system.

Clearlight®

How To Change an LED Strip

You will need:

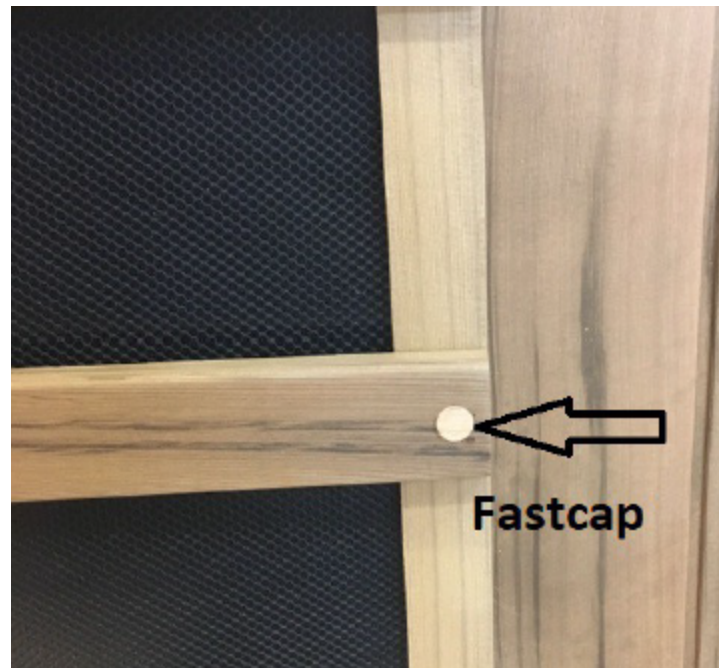
- Phillips Head Screwdriver
- Fastcaps

IMPORTANT: UNPLUG THE SAUNA BEFORE STARTING.

Make sure you have extra Fastcaps provided by Clearlight Saunas. Outside LED Strips are connected through the inside.

Step 1

To replace the LED strip you must remove the corresponding heater guard. The heater guards are attached to the walls of the Sauna. Behind little round wood fastcaps you will find the screws to detach the heater guard. Simply puncture the fastcap with your screwdriver to reveal the screw.



Step 2

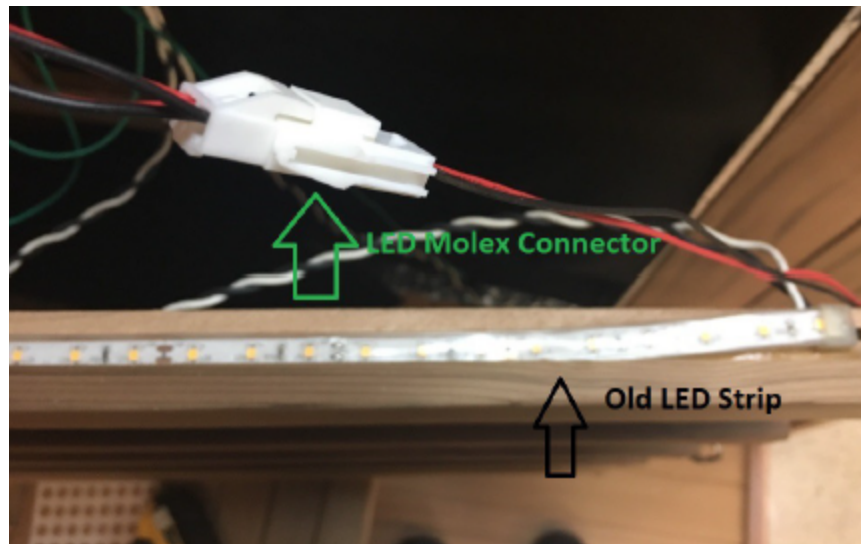
For more questions or concerns, call +1.510.601.1775 Option 2.
Or email service@infraredsauna.com

Clearlight®

Once the heater guard is removed it will reveal the molex connectors for the LED strip. Behind the heater guard is a host of wires, look for the black and red wires and find the corresponding molex connectors. Unconnect each molex to free the original LED strip.

Step 3

The original LED strip may have an adhesive sticking it to the Sauna, simply peel it back and remove the original LED strip.



Step 4

Take the new LED strip and re-connect the molex connectors. Make sure the wires are fished through the proper holes, avoiding any pinched wires. The new LED strip won't need any new adhesive as it was intended for keeping the original LED strip in place during transportation.

Clearlight®



Step 5

Before screwing back on the heater guard make sure to test to the LED light to make sure it is working. Once the LED is working screw the heater guard back into place and use the provided fastcaps to cover the visible screw holes.